

An Overview on Compact Blush Powder

Renjini A.S*¹, Subash Chandran M.P², Prasobh G.R³, Akhila J.B¹,
Pooja Rejakumar¹, Sahishna S.S¹

¹BPharm student, Sree Krishna College of Pharmacy and Research Centre, Parassala, Thiruvananthapuram, Kerala, India. 695502

²Professor and Head, Department of Pharmaceutics, Sree Krishna College of Pharmacy and Research Centre, Parassala, Thiruvananthapuram, Kerala, India. 695502

³Principal, Sree Krishna College of Pharmacy and Research Centre, Parassala, Thiruvananthapuram, Kerala, India. 695502

Submitted: 01-04-2022

Accepted: 11-04-2022

ABSTRACT

This paper describes compact blush powder which is widely used as cosmetics field. Blushing powder is one of the best product cosmetics item. Now a days the compact powder blush is used mostly, and compact powder is one of the most commonly used makeup products. It is a lightweight powder that usually comes in a powder form. It is used to give your face a light coverage or to give your makeup the perfect finish. The blushing powder is used to highlighting the makeup while applied to cheeks. The choice of cosmetics is depends on the skin types. There are various colours of blushing powder was available in market. Blushing powder is again divided in to three category such as compact blush powder, loose blush powder and cream blush. This review paper discusses in details about the advantages, disadvantages and uses of compact blush powder and also discusses the preparation of compact blush powder.

KEY WORDS: compact blush powder, colour, powder, blush, beautifying, cosmetics

I. INTRODUCTION

Cosmetics are defined as “items with mild action on the human body for the purpose of cleaning, beautifying, adding to the attractiveness, altering the appearance, or keeping or promoting the skin or hair in good condition” while functional cosmetics, even if falling under the cosmetic definition, are designated as “items fulfilling specific actions like skin whitening, minimizing the appearance of lines in the face and body, protecting from the sun and sun tanning¹”.

The FDA defines a cosmetic as a product (excluding pure soap) intended to be applied to the human body for cleansing, beautifying, promoting attractiveness, or altering the appearance².

As per section 3 of the Drugs and Cosmetics Act 1940 and Rules 1945, cosmetics

means any article intended to be rubbed, poured, sprinkled or sprayed on, or introduced into, or otherwise applied to, the human body or any part there of for cleansing, beautifying, promoting attractiveness, or altering the appearance, and includes any article intended for use as a component of cosmetic³.

Powders are products that are intended to change the appearance of facial skin. They typically work by applying colour to the skin or through other effects such as altering the reflection of light or the shininess of the skin. Different types of powders used as cosmetics are foundation powder, blushing powder, H D powder, mineral powder, talcum powder, finishing powder, translucent powder, dewy powder, colour correcting powders etc⁴. The pictorial representation different types of face powders are shown in figure 1.



Figure 1: Different types of face powder

The blushing powders are mainly used to highlighting the makeup. The blushing powders are classified into three types

- Compact powder blush
- Loose powder blush

- Cream blush⁵

The pictorial representation of compact powder blush, loose powder blush and cream blush are shown in the figure 2, figure 3, figure 4 respectively.



Figure 2: Compact blush powder



Figure 3: Loose powder



Figure 4: Cream blush

COMPACT BLUSH POWDER

Compact powder is one of the most commonly used makeup products. It is a lightweight powder that usually comes in a powder form. It is used to give your face a light coverage or to give your makeup the perfect finish⁶.

It is pressed into a pan and can be used to get rid of the excess oil and sweat on your face. A compact powder also adds light coverage to your skin and evens out your complexion. On days when you want to opt for light makeup, you can just use some concealer and compact powder to do your base makeup.

This is one of the widely used type of blushing formulations. The selection of blushing preparation is based on skin type. Compact powder generally isn't used its own, apply it after foundation, to set the makeup on your skin and make it last longer. The skin type of persons is different in each other, so the colour and type on blush was depends⁷.

STRUCTURE OF SKIN

The skin or cutaneous membrane is the outermost layer which covers and protects the surface of the body from external environment⁸. It is the complex and largest organ of the body in terms of both surface area and weight which unites with mucosal lining of the respiratory, digestive and urogenital tract to form a capsule which separate internal body surface from external environment. Normally the texture of skin very smooth but becomes rough due to numerous environmental and age factors. Cosmetics are the formulations used to beautifying the skin. The diagrammatic representation of layers of skin is shown in figure 5. The skin is broadly segregated into three layers such as,

- **Epidermis**

The epidermis, the outermost layer of skin, provides a waterproof barrier and creates our skin tone.

- **Dermis**

The dermis, beneath the epidermis, contains tough connective tissue, hair follicles, and sweat glands

- **Hypodermis**

The deeper subcutaneous tissue (hypodermis) is made of fat and connective tissue.

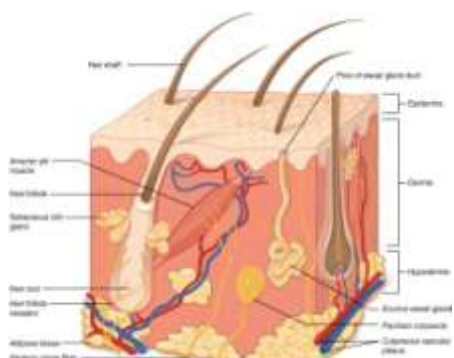


Figure 5: Diagrammatic representation of layers of skin

TYPES OF SKIN

There are five types of healthy skin⁹.

- Normal skin
- Oily skin
- Dry skin
- Combination skin (dry + oily)
- Sensitive skin

Normal skin

This skin is neither too dry nor too oily. It has regular texture, no imperfections and a clean, soft appearance and does not need special care. Loose powder blush is suitable for normal skin¹⁰.

Oily skin

Oily skin has a porous, humid and bright appearance. It is caused by excessive fat production by sebaceous glands and usually determined by genetic or hormonal causes. Loose powder blush suitable for oily skin¹¹.

Dry skin

Dry skin is caused by external factors such as the weather, low air humidity, immersion in hot water and it usually temporary. Compact blush is more suitable than loose powder blush for dry skin¹².

Combination skin (dry + oily)

Based on its location, it presents characteristics of both dry and oily skin. Since distribution of sebaceous and sweat gland is not homogeneous. Both compact and loose powder blush are suitable for combination skin¹³.

Sensitive skin

Sensitive skin is more prone to react to stimuli to which normal skin has no reaction. It is a fragile skin, usually accompanied by feelings of discomfort such as heat, tightness, redness or itching. It is a delicate skin that needs more care to

fight dryness, roughness and usual appearance. Mineral based loose powder blush are suitable for sensitive skin¹⁴.

DIFFERENT SHADES OF COMPACT BLUSH POWDER

Different shades of compact blush are available in market. They are peppermint candy, mimosa, peach, strawberry, mauvette, pretty naked, healthy, berry, pink plum, cherry, plum, and chiffon¹⁵. The pictorial representation of different shades of compact blush powder is shown in figure 6.



Figure 6: Different shades of compact blush powder

When you have fair/light skin, your best blush shades are soft pink, light coral, and peach. For ladies, with light skin tones and cool or pink undertones, you should wear the soft pink shades for a natural look and the peach/coral shades for a pop of colour. 5 Types of blushes choose the blush type that suits your skin the best.

Compact Blush

If you have fair skin, remember less is more to own a healthy flush. Select shades in pale pink or baby pink for a subtle glow¹⁶. The pictorial representation of compact blush is shown in figure 7.



Figure 7: Compact blush

Loose Powder Blush

If you have sensitive skin, then you must save yourself the disdain by using a loose powder blush¹⁷. Mix two shades for a rosy luminosity or get creative by infusing a speck of bronzer or highlighter for a sun-kissed radiance. The pictorial representation of loose powder blush is shown in figure 8.



Figure 8: Loose powder blush

Cream Blush

If you are looking for something organic and extremely long-lasting, then this blush is your savior. They will glide on effortlessly, feel weightless on your cheeks and will give you a natural dewiness¹⁸. To work your blush-first face, this and the tip of your ring finger is all you need. Cream blush works on all kinds of skin types and across all age ranges. But it's especially perfect for dry or more mature skin which always needs that extra bit of moisture. The one skin type that might have issues with cream blush is very oily skins, powder formula makeup will always be the better option. The pictorial representation of cream blush is shown in figure 9.



Figure 9: Cream blush

Cheek Tint

Everything your cream blush can do, this can also do sans the dewiness. This water-based hero is quite the multitasker as well¹⁹. Use it on your lips and suitable to be used as a blush as well as a lip colour, lip and cheek tints uplifts the look of your face. The tints are easy to carry and use.

The pictorial representation of cheek tint is shown in figure 10.



Figure 10: Cheek tint

Blush Stick

This cream-based stick is meant for on-the-go convenience. You can simply carry it around in your bag or makeup pouch. It's seamless in application and can be blended with a brush or fingers. The pictorial representation of blush stick is shown in figure 11.



Figure 11: Blush stick

Properties Of Compact Blush Powder

- It should be free from grittiness.
- Impart good colour.
- Free from breakage.
- It should be homogenous.
- Free from microbial growth.
- It should have adsorptive and absorptive capacity.
- It should adhere easily.
- It should spread uniformly.

Advantages Of Compact Blush Powder

- Applying compact blush powder can help in absorbing excess oil from your skin²⁰.
- Compact powders also help give your face a matte finish which stays for long and doesn't

let your face get that shine even after a couple of hours.

- Have long lasting effect.
- Most dry skin types prefer to use compact blush because pressed powder have more oils in them and can look “cakey” when applied on very oily skin types.
- Easy to carry.
- Easy to apply.
- Compact blush is also suitable for all types of skin especially dry skin.

Disadvantages Of Compact Blush Powder

- High cost as compared to other formulations.
- Inhaling cosmetic talc can cause serious respiratory problems. Most reports involve a child or baby who accidentally inhaled or swallowed baby powder. But face powder poisoning can also occur. Symptoms of face powder poisoning include: coughing, breathing trouble, eye irritation and a burning sensation in the throat.
- Frequent use of compact powder will damage your skin cells and also the skin become dull.

Preparation Of Compact Blush Powder

There are various methods are available for the formulation of compact blush powder. Different methods and ingredients are used for the formulation. The pictorial representation of preparation of compact blush powder is shown in figure 12.

Compact blush ingredients are

- 3 tablespoon water
- Baby powder
- 1-6 drops rose mix



Figure12: Preparation of compact blush powder

Preparations steps

1. Consider making a compact blush powder
2. Find a mixing bowl

3. Put your coloring agent and water in a bowl and mix together
4. Consider tinting your blush with other colors
5. Add in a bit of baby powder and mix
6. Transfer your blush in a container
7. Smooth out the blush
8. Wait for the blush to dry
9. Use the blush

Consider making a compact blush powder

This blush closely resembles the blush you would buy in a store, except that it lacks all of the dangerous chemicals²¹. You can apply it like you would any other pressed powder blush with a brush or makeup sponge.

Finding a mixing bowl

You will need a small bowl to mix all of your ingredients together. Make sure that the bowl is clean, or you will risk contaminating your makeup.

Put your coloring agent and water in a bowl and mix together

You will need 3 tablespoons of water. The amount of colouring you use will determine how dark or how light you want your blush to be. Some proportions

- For a light pink blush, use 1 to 2 drops of rose mix
- For a medium pink blush, use 3 to 4 drops of rose mix
- For dark pink blush, use 5 to 6 of rose mix

Consider tinting your blush with other color

You can leave your blush a traditional pink, or you can add other colour to get the shade you want.

Add in a bit of baby powder and mix

You want to end up with a thick paste. Try adding 1 to 2 teaspoons of baby powder at a time. If you do not have any baby powder, you can make your own by combining cornstarch and arrowroot powder. The blush will be damp and have a darker colour, but it will lighten a little once it dries.

Transfer your blush in a container

You can use any container you want, but a shallow container, Such as an old makeup pallet, will work best. You will be applying this blush with a brush. Make sure that your container has a lid.

Smooth out the blush

When you first put your blush into the container, it may be lumpy. Use a spoon, knife or

spatula to smooth the surface down so that it is flush with lip of the container. Just like a store bought during this process.

Water for the blush to dry

Set the blush in a warm, dry and preferably sunny location. Open the lid and leave it for 24 hours. After this, the blush should be dry and ready to use. Note that, depending on how much water you added, you blush may require more drying time.

Use of blush

You can apply your blush as you would any other store bought powder blush, using a brush or a makeup sponge. Be sure to keep the lid on your container closed when you are not using the blush. The pictorial representation of compact blush powder is shown in figure 13.



Figure 13: Compact blush powder

LABEL OF COMPACT BLUSH POWDER

The label is an important thing in a formulation. The label should bear name and quantity of powder blush. It should have the ingredients with their quantity. It should have direction and caution.

Label of a compact blush powder was shown in figure 14.



Figure 14: Label of compact blush powder

Evaluation Tests Of Compact Blush Powder

- **Breakage test**

This test was only performed for the compact blush powder by dropping the powder by dropping the powder on the wooden surface three times at a height of 0.2-0.25m.

- **Physical characteristics**

The colour, odour, appearance of the powder is evaluated by simple visualization.

- **pH**

The PH is a measure of the acidic or basic nature of the formulation. The pH of the compact powder blush is determined to avoid the irritation to the skin. The pH was determined by using pH meter.

- **Particle size**

The particle size of loose powder blush was determined by using microscope and sieve analysis.

- **Abrasiveness**

It was studied by rubbing the powder on a surface and then studying the effect on the surface using microscope.

- **Bulk density (BD) and tapped density (TD)**

The powder was passed through a number 18 sieve into a pre-weighed 25 ml graduated cylinder with 0.5ml markings. The bulk volume was measured after manually tapping the cylinder two times on a flat table top surface. The tapped volume was measured with the tap density tester after tapping in increments of 500, 750 and 1250 taps with 250 drops per minute.

Bulk density = Bulk mass/ Bulk volume

Tapped density = Mass of granules/ Volume of granules

- **Carr's index**

The bulk and tapped densities were used to calculate Carr's compressibility index to provide measure of the flow properties and compressibility of powders.

Carr's index = $\frac{\text{Tap density} - \text{bulk density}}{\text{tap density}} * 100$

- **Hausner ratio**

It is indicative of flow properties. It is derived property from bulk and tapped density. Lower the Hausner ratio is indicating better flow whereas higher ratio indicates poor flow of granules. Hausner ratio is calculated by the following formula:

Hausner ratio = $\frac{\text{Tap density}}{\text{Bulk density}}$

- **Moisture content**

Percentage of moisture content is calculated by using formula:

% Moisture = $\frac{\text{Initial weight} - \text{final weight}}{\text{initial weight}} * 100$

- **Colour homogeneity test**

Homogeneity test was done by applying the sample on a piece of glass or other suitable transparent material. The blushes should show a homogeneous arrangement and show no coarse grains.

- **Polishing test**

The polishing test was carried out on all dosage forms in each formula. Each formula was applied to the inner arm three times to observe the colour.

- **Colour stability test**

The formulation stored at 8 °C and 30 °C were tested for the colour stability on the 1st, 7th, 14th, 21st, 28th days using the Dermalab combo by observing the * a value.

II. DISCUSSION

The cosmetics are the agents which are used for the beautifying as well as treatment effect. The demand of cosmetics is increased day by day. The blushing powder having beautifying effect. There are three types of blushing powders are available in market like, loose powder blush, compact blush and cream blush. The choice of selection of blush should be depends on the type of skin. There are five types of skin such as dry skin, oily skin, combinational skin, normal skin and sensitive skin. Compact powder is one of the most commonly used makeup products. It is a lightweight powder that usually comes in a powder form. It is used to give your face a light coverage or to give your makeup the perfect finish. Loose powders are more finely milled so they contain less oils, and are typically used on oily skin types to control the oil your face develops throughout the

day. cream blushers deliver a dewier, more natural-looking flush that awakens and flatters your natural skin tone. Here included the various methods for the formulation of compact blush powder. The evaluation of blush must be carried out. One of the important test of compact blush powder is breakage test. And then other evaluation test of compact blush powder are physical character test, pH, particle size, abrasiveness, bulk density, tapped density, angle of repose, moisture content etc. After passing the evaluation test it means that the compact blush powder was used in all types of skin and also blush should be able to market.

III. CONCLUSION

Cosmetics can help to improve our mood, enhance our appearance and boost our self-esteem. They can also help to exhibit personal style and, as such, are an important means of social expression. A "cosmetic product" shall mean any substance or mixture intended to be placed in contact with the various external parts of the human body (epidermis, hair system, nails, lips and external genital organs). Cosmetics are products you apply to your body to clean it, make it more attractive, or change the way it looks. Cosmetics are products designed to cleanse, protect and change the appearance of external parts of our bodies. The blushing powders are used to impart beautifying effect. Blush powder also called blush or blusher, is a cosmetic for coloring the cheeks in varying shades, or the lips red. It is applied as a powder or cream. Various colours of blush are available in market. Compact blush is a true enhancer of complexion. Compact blush mainly suitable for dry skin and combination skin and also it is suitable for all types of skin. Compact powder is one of the most commonly used makeup products. It is a lightweight powder that usually comes in a powder form. It is used to give your face a light coverage or to give your makeup the perfect finish.

REFERENCES

- [1]. Anute V B , Deshmuth A and Khandag A; Consumer buying behavior towards cosmetic products. IJMSS 2015; 3(07): 25-34.
- [2]. Phulen sarama, Harish kumar, Bikash medhi; Cosmetovigilance in India: Need of the day. Indian Journal of pharmacology 2017; 49(5): 341-343.
- [3]. Catia contado, Anto nella pagnosis; A new strategy for pressed powder analysis: Allergenic metal ion content and particle

- size distribution. *Science of the total environmental* 2012; 432(3): 178-179.
- [4]. Kapoar V P ; Herbal cosmetics for skin and hair care. *CSIR* 2005; 51(8): 7-14.
- [5]. Qian wong, Shumeilui, Lizhou kekehi, Liya song: Effect of cosmetic chemical preservatives on resident flora isolated from healthy facial skin. *Journal of cosmetics dermatology* 2019; 18(2): 652-658.
- [6]. Subhu venkatraman, Robert gak; skin adhesives and skin adhesion. *Biomaterials*; 1998; 19(3): 1119-1136.
- [7]. Giorgiana Giancola, Mitchell L schlossman; Decortive cosmetics. *Cosmeceuticals and active cosmetics* 2015; 53(3): 191-219.
- [8]. Randy Thornhill, Steven W Gangestad; Facial sexual dimorphism, development stability and susceptibility to disease in men and women *Evolution and human Behavior* 2006; 27(2): 131-144.
- [9]. Elizabeth A Baldwin, Myrna O Nisperos Carriedo, Robert A Baker; Use of edible coating to preserve quality of lightly processed products. *Critical Reviews in food Science and Nutrition* 1995; 36(6): 509-524.
- [10]. Vikas Anand Saharan, Vipin Kukkar, Mahesh Kataria ; Ordered mixing: mechanism process and application in pharmaceutical formulation. *AJPS*.2005; 3(6): 240-259.
- [11]. Stephen N Sullivan; Exercise associated symptoms in triathletes. *The physician and sports medicine*. 1987; 15(9): 105-108
- [12]. Hajare A A, Dr. Bhagwat D A. *Textbook of pharmaceutics 1 as per PCI regulations* page no. 6.1-6.14.
- [13]. Berthele H ,Sello O, Lavardi M, Mielcarek ; Determination of the influence of factors (ethanol, PH, and aw) on the preservation of cosmetics using experimental design. *International journal of cosmetic science* 2014; 36(1): 54-61.
- [14]. Akelesh T, Siva Kumar R, Jothi R PVR; Evaluation of standards of some selected cosmetic preparations. *Asian journal of pharmaceutical research and Health care* 2010; 2(4): 302-306.
- [15]. Ezzat chan Abdullah, Derek Geldark; The use of bulk density measurements as flowability indicators. *Powder technology* 1999; 102(2);151-168.
- [16]. Dhat shalaka, Nail S R, Agharkar Amruk; vitamine E loaded pectin alginate microspheres for cosmetics application. *JPR* 2009; 6(1): 1098-1102.
- [17]. Hnin N Y , Kanlayavattankul M; Evaluation on physicochemical properties and stability of bark powder for natural face powder products. *Top conference series: materials science and engineering* 2022; 1234(1): 17-28.
- [18]. Butler H, Purchers perfumes ,cosmetics and soaps 2000 10th edition springer, Netherlands.
- [19]. Yaliana A, Nurdianti L , Fitriani F and Amins ; Formulasi dan evaluation cosmetics dekaratifperana dengan menggunakan lesitin sebagai pelembab kulit *Fitoformoka journal llmian farmais* 2020; 10(1): 1-11.
- [20]. Mosquera Tagupanta T A ,Espadermo M ; Sensary analysis of cosmetic formulation made with essential oilof aristeguietia glutinase (matice) and ocotea quixos (ishpingo), *Int.J. phytocos Nal ingred* 2018; 7(3); 13-28.
- [21]. Suci Wulan Sar, Ratna djamil and Faizatin; Formulation of blush preparation by using natural colouring from red beetroot extract. *Indanes. J. chem.* 2021; 21(2): 860-870.