

COVID-19: an assessment on recent Pandemic

Swapnil R. Bankar*

Rayat Shikshan Sanstha's, Department of Chemistry, Sharadchandra Pawar Mahavidyalaya, Lonand (Affiliated to Shivaji University, Kolhapur) Dist. Satara (MS) 415521, India

Submitted: 25-01-2022

Accepted: 05-02-2022

ABSTRACT

The latest outburst of recent pandemic coronavirus disease 2019 (COVID-19) from Wuhan town, China mainland, abruptly rose between November and December 2019. It has currently end up a public fitness emergency globally as stated via the world fitness organization (WHO) on January 2022. Coronaviruses (CoVs) were defined for more than 50 years in the past. CoVs infect many species of animals, together with people. Human CoVs triggered most effective the commonplace bloodless. But, within the spring of 2003, it became clear that a brand new human CoV turned into chargeable for the intense acute respiratory syndrome (SARS). The foundation of the SARS-CoV poses thrilling questions on CoV evolution and species specificity. With the incidence of the SARS epidemic, CoV may additionally now be taken into consideration "rising pathogens." the principle objective of this paper is to review and to enlighten the COVID-19 virus and its pathogenesis. For this reason, the prevailing evaluation indicates a brief and the fundamental facts approximately the COVID-19.

Keywords: COVID-19Coronavirus, respiratory syndrome, SARS-CoV-2.

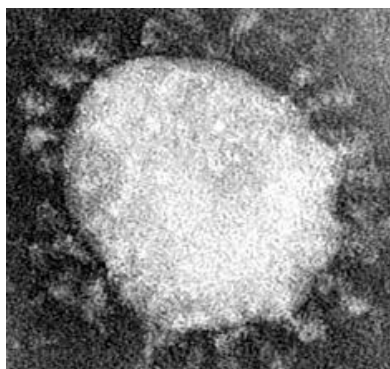
I. INTRODUCTION

The call "coronavirus" become termed in 1968, that's derived from the "crown-like" morphology observed for those viruses within the electron microscope.(1) The Coronaviridae circle of relatives become established within the yr 1975 with the aid of the international Committee on the Taxonomy of Viruses (ICTV).(2) extreme acute breathing syndrome coronavirus 2 (SARS-CoV-2) turned into the call of the new virus given by using the ICTV on February 11, 2020, because it turned into genetically associated however specific from the coronavirus (CoV) accountable for the SARS outbreak of 2003. Furthermore, the arena health organisation (WHO) named the ailment as a result of this virus as "COVID-19".(3)

No longer handiest China but in the whole world COVID-19 created a public fitness hassle. The WHO declared COVID-19 as an worldwide emergency on January 31, 2020, that threatened public fitness. WHO updated the state of affairs, declaring COVID-19 as an epidemic on March 12, 2020 as the contamination became much extra widespread.(4) It's far a zoonotic disease, which constitutes a massive group of infections that may be transmitted from animals to human beings.(5) Bats are associated with SARS, they're taken into consideration as essential reservoirs and vectors for the exponential unfold of such infectious diseases.(6)

StructureHistory ofCoronavirus

The nomenclature of Coronaviruses (CoVs) takes its origin in Latin, because of this "crown-like". That is because of the spikes of the virus which protrude to the periphery. Coronaviridae circle of relatives of the order Nidovirales, coronaviruses (CoVs) are a numerous organization of positive-stranded RNA viruses. Virus length is measure approximately about 60 to 150 nm in diameter via electron microscopy.(7) Their helical structure nucleocapsid is approximately 26 to 32 kb in length, making it the most important genome among RNA viruses.(8) Structurally this virus accommodates of a big, unique-stranded RNA as its genome. A complete of 4 genera of CoVshas been discovered and those are α -CoV, β -CoV, γ -CoV, and δ -CoV. Out of these four genera, α -CoVand β -CoVversions are observed to infect particularly the gastrointestinal, respiratory, and valuable anxious structures of mammals. Whereas γ -CoVand δ -CoVwere suggested infections restricted to birds.(9) SARS-CoV isn't like COVID-19, as in COVID-19 the etiologic agent is SARS-CoV-2, which has the equal host receptor: human angiotensin-converting enzyme 2 (ACE2). Every enveloped viral particle has genetic cloth with 5'-cap shape and 3'-poly A tail which interact with nucleoprotein.(10)



Coronavirus (Coronavirus Wikipedia)¹¹

Pandemic Situation

From the WHO internet web site supply there were a total of 340,543,962 showed instances and 5,570,163 deaths until January 21, 2022 due to COVID-19. And as of 18 January 2022, a complete of 9,571,502,663 vaccine doses had been administered.⁽¹¹⁾ Out of general global European and American international locations are affected greater. Present studies has endorsed that human beings of every age are typically vulnerable to COVID-19. A better chance of contamination is discovered in folks that are in near touch with COVID-best times, which includes healthcare workers and exclusive sufferers interior hospitals and clinics.⁽¹²⁾

Mode of Transmission

In origin COVID-19 although zoonotic, is now broadly speaking transmitted from human beings to human beings. Transmission mode is through droplets ejected for the duration of speakme, coughing, or sneezing; via touch with surfaces at once exposed to the virus; by way of inhaling aerosols; and now it also spread via feces. So the transmission of COVID-19 is variable and may occur in distinct instances.^(13,14)

Contamination may be received by using the inhalation of this droplet or touching eyes, mouth, nose, or by way of contacting the surface infected with the aid of those droplets. A observe revealed that there is no evidence of intrauterine transfer in pregnant women inflamed by using SARS-COV-2.⁽¹⁵⁾

Incubation Period

The incubation duration is 1 to 14 days, and the COVID-19 is contagious during the latency period primarily based at the current epidemiological research. It's far particularly transmissible in human beings, in particular in the

elderly and in immune compromised human beings.

SARS-CoV-2 remains feasible on surfaces in a different way, like up to 72 hours on plastic, stainless-steel, and different steel surfaces; up to 24 hours on cardboard surfaces; 6 to 12 hours on soft surfaces; 4 to 9 hours on copper surfaces; and up to 3 hours in suspended aerosols. ⁽¹⁶⁾

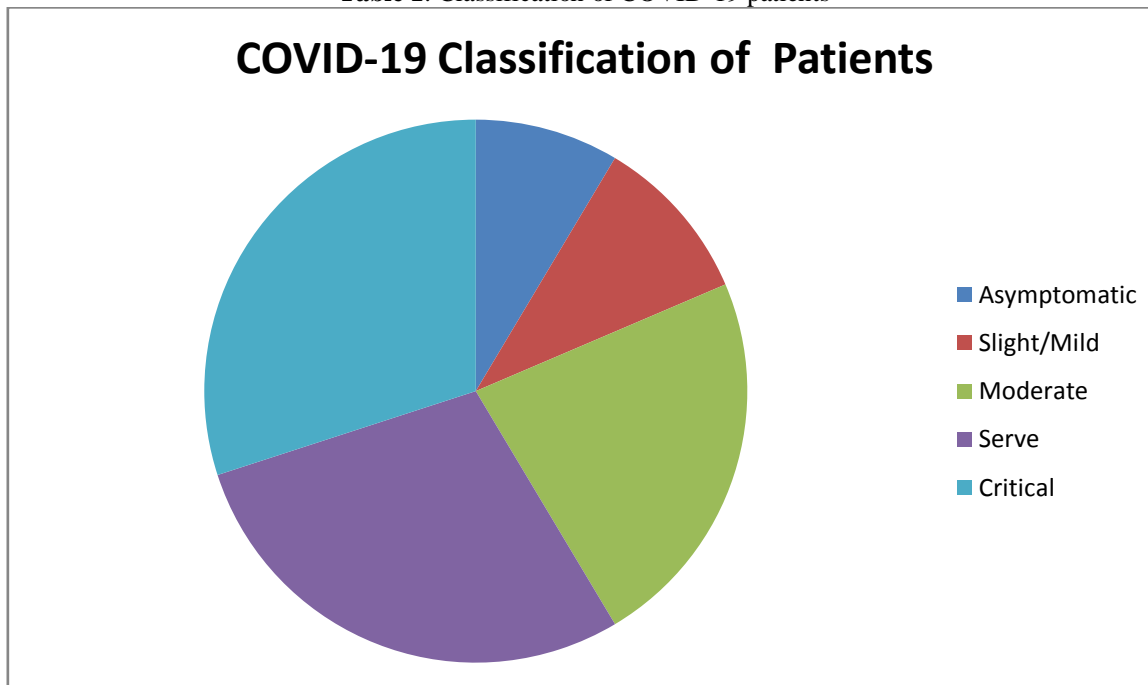
Clinical Manifestations

There may be an extreme impact on one's social existence, due to the fact that all mass gatherings and social occasions are being averted to reduce the transmission quotes because the outbreak of COVID-19. The extreme or dying patients with 2019-nCoV infection have been more often than not old age with comorbidities. Males are maximum typically affected. The suggest age is normally between 49 and 61 years. The development of CoV is in 3 unique degrees, such as slight/ mild, moderate, and severe. COVID-19 normally is gift with systemic and/or respiration manifestations. A few inflamed with SARS-CoV-2 are asymptomatic and might act as providers.

COVID-19, an ailment that manifests in signs of high fever and dry cough, and in advanced instances, sufferers may also have breathing distress. Further, patients may also undergo extraordinary symptoms along with nausea, vomiting, diarrhea, dizziness, muscle joint ache, myalgia, or fatigue, hemoptysis, and lack of urge for food (Table 1).

In intense cases, immunocompromised situations, inclusive of hypertension and diabetes mellitus, leads to pneumonia, severe breathing failure, kidney failure, and dying might also occur (Sabino-Silva, Jardim&Siqueira, 2020).^(17,18)

Table 1: Classification of COVID-19 patients



Asymptomatic	Slight/ Mild	Moderate	Severe	Critical
COVID nucleic acid test positive. With none clinical symptoms and symptoms and the chest imaging is normal.	symptoms of acute upper respiration tract contamination (fever, fatigue, myalgia, cough, sore throat, runny nostril, sneezing) or digestive signs (nausea, vomiting, belly pain, diarrhea).	Pneumonia (common fever, cough) and not using a obvious hypoxemia, chest CT with lesions.	Pneumonia with hypoxemia (SpO2 < 92%)	Acute respiration distress syndrome (ARDS) can also have shock, encephalopathy, myocardial injury, coronary heart failure, coagulation disorder, and acute kidney injury.

Investigations

Patients sufferers with COVID-19 have established excessive viral loads of their higher and decrease respiratory tracts in the first 5 to 6 days of the onset of symptoms.(19) A nasopharyngeal (NP) swab or an oropharyngeal (OP) swab is suggested for screening or diagnosis of early infection.(20)So one can acquire an NP swab specimen, the swab need to be inserted deeply into the nasal hollow space. Swabs need to be kept in location for 10 seconds even as being circled 3 times. Swabs should have gathered trustworthy synthetic fibers, inclusive of polyester, as well as artificial nylon handles.(21)

Self-collected saliva specimen is every other opportunity choice for amassing an top respiratory tract specimen to evaluate patients with suspected COVID-19 pneumonia.

Repeated testing may be particularly critical if a affected person has a medical image of viral pneumonia, a capacity exposure records, and/or radiographic locating in chest computed tomography (CT) or magnetic resonance imaging test.

The very best viral load is present inside the lower breathing tract, the sputum sampling or bronchoalveolar lavage have to be used for amassing specimens for the diagnosis of COVID-19. patients with severe pneumonia and ARDS may

require emergent intubation and respiratory isolation in a poor-stress room. in the course of the intubation manner, the lower respiratory tract sputum specimen may be gathered.(22) thus, aside from direct respiration sampling, a rectal swab and real-time RT-PCR techniques can be desired for detecting SARS-CoV-2.

Precautions

Interim hints for the gathering, coping with, and trying out of clinical specimens that could comprise SARS-CoV-2 have been released through the Centre for sickness manage and Prevention and the WHO. The hints for the prevention and spread of ailment are given, including hygiene maintenance, use of biocidal dealers, social distancing, and quarantine human beings.

Because the threat of transmissions of CoV from people to people is extra and social distancing is the first-rate way for precautions. Therefore, the COVID-19 outbreak needs to be controlled via sure strict and mandatory precautions to forestall this risky devil virus. Also, its miles a first-rate mission for all global scientists to discover an powerful counteractive drug to control this deadly CoV. For that reason, considering the intensity of the unfold of CoV and its impact on global health, it is essential to recognize the dos and don'ts for the persistence, precautions, and diagnostic strategies in opposition to the difficult COVID-19.(23)

II. CONCLUSION

The COVID-19 pandemic is an existing problem affecting humans global. Without fundamental healing interventions, current management is to reduce the virus unfold and offer supportive care for diseased sufferers. The pleasant cleaning sanitization and hygiene practices ought to control this latest and maximum difficult disorder, but not confined to this, there may be a want for a permanent solution for the diminution of COVID-19, globally.

Source of support: Nil

Conflict of interest: None

REFERENCES

- [1]. Tyrrel, DAJ, Almedia JD, Berry DM, et al. Coronavirus. *Nature* 1968;220:650. DOI: 10.1038/220650b0.
- [2]. Aldahlawi SA, Afifi IK. COVID-19 in dental practice: transmission risk, infection control challenge, and clinical implications. *Open Dent J* 2020;14:348–354. DOI: 10.2174/1874210602014010348.
- [3]. Ouassou H, Kharchoufa L, Bouhrim M, et al. The pathogenesis of coronavirus disease 2019 (COVID-19): evaluation and prevention. *J Immunol Res* 2020;2020:1357983. DOI: 10.1155/2020/1357983.
- [4]. Atas O, Yildirim TT. Evaluation of knowledge, attitudes, and clinical education of dental students about COVID-19 pandemic. *PeerJ* 2020;2020:9575. DOI: 10.7717/peerj.9575.
- [5]. Cantas L, Suer K. Review: the important bacterial zoonoses in “One Health” concept. *Front Public Health* 2014;2:144. DOI: 10.3389/fpubh.2014.00144.
- [6]. Villani FA, Aiuto R, Paglia L et al. COVID-19 and dentistry: prevention in dental practice, a literature review. *Int J Environ Res Public Health* 2020;17:4609. DOI: 10.3390/ijerph17124609.
- [7]. Bhardwaj SS, Alduwayhi S, Bhardwaj A. COVID-19, various treatment options and special considerations for dentistry. *J Pharm Res Int* 2020;32(10):70–76. DOI: 10.9734/jpri/2020/v32i1030494.
- [8]. Fallahi HR, Keyhan SO, Zandian D, et al. Being a front-line dentist during the Covid-19 pandemic: a literature review. *MaxillofacPlastReconstrSurg* 2020;42:12. DOI: 10.1186/s40902-020-00256-5.
- [9]. Su S, Wong G, Shi W, et al. Epidemiology, genetic recombination, and pathogenesis of coronaviruses. *Trends Microbiol* 2016;24: 490–502. DOI: 10.1016/j.tim.2016.03.003.
- [10]. Kamate SK, Sharma S, Thakar S, et al. Assessing knowledge, attitudes and practices of dental practitioners regarding the COVID-19 pandemic: a multinational study. *Dent Med Probl* 2020;57(1):11–17. DOI: 10.17219/dmp/119743.
- [11]. Internet Source: Covid19.who.int
- [12]. Spagnuolo G, De Vito D, Rengo S, et al. COVID-19 outbreak: an overview on dentistry. *Int J Environ Res Public Health* 2020;17:2094. DOI: 10.3390/ijerph17062094.
- [13]. COVID.19 and dental preparedness. *J Dent Defence Sect.* 2020. Available at: <http://www.journaldds.org>
- [14]. Gupta P, Bhagyalakshmi A, Mehta P. COVID-19: a dental perspective. *Int J Community Med Public Health*

- 2020;7(5):1994–1997. DOI: 10.18203/2394-6040.ijcmph20202020.
- [15]. Chen D, Yang H, Cao Y, et al. Expert consensus for managing pregnant women and neonates born to mothers with suspected or confirmed novel coronavirus (COVID-h19) infection. *Int J GynaecolObstet* 2020;149(2):130–136. DOI: 10.1002/ijgo.13146.
- [16]. Rothan HA, Byrareddy SN. The epidemiology and pathogenesis of coronavirus disease (COVID-19) outbreak. *J Autoimmunity* 2020;109:102433. DOI: 10.1016/j.jaut.2020.102433.
- [17]. Huang C, Wang Y, Li X, et al. Clinical features of patients infected with 2019 novel coronavirus in Wuhan, China. *Lancet* 2020;395(10223):497–506. DOI: 10.1016/S0140-6736(20)30183-5.
- [18]. Peiris JS, Yuen KY, Oserhaus AD, et al. The severe acute respiratory syndrome. *N Eng J Med* 2003;349(25):2431–2441. DOI: 10.1056/NEJMra032498.
- [19]. Pan Y, Zhang D, Yang P, et al. Viral load of SARS-CoV-2 in clinical samples. *Lancet Infect Dis* 2020;24:30113–30114. DOI: 10.1016/S1473-3099(20)30113-4.
- [20]. Zou L, Ruan F, Huang M, et al. SARS-CoV-2 viral load in upper respiratory specimens of infected patients. *N Engl J Med* 2020;382:1177–1179. DOI: 10.1056/NEJMc2001737.
- [21]. To KK, Tsang OT, Leung WS, et al. Temporal profiles of viral load in posterior oropharyngeal saliva samples and serum antibody responses during infection by SARS CoV-2: an observational cohort study. *Lancet Infect Dis* 2020;23:30196–30191. DOI: 10.1016/S1473-3099(20)30196-1.
- [22]. Kim C, Ahmed JA, Eidex RB, et al. Comparison of nasopharyngeal and oropharyngeal swabs for the diagnosis of eight respiratory viruses by real-time reverse transcription-PCR assays. *PLoS One* 2011;6:e21610. DOI: 10.1371/journal.pone.0021610.
- [23]. To KK, Lu L, Yip CC, et al. Additional molecular testing of saliva specimens improves the detection of respiratory viruses. *Emerg Microbes Infect* 2017;6:e49. DOI: 10.1038/emi.2017.35.